



BRAILLEX[®] EL 80s

User's Manual

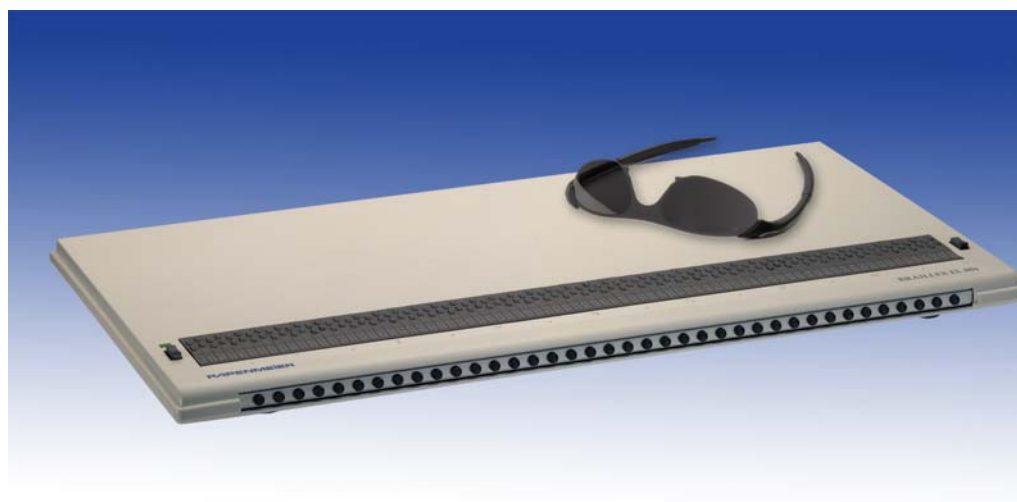


Table of Contents

Introduction	I
The Easy Access Bar	I
CE Medical Devices Directive	I
Symbols and Conventions	II
Getting Started	3
Physical Description	3
Installation	3
USB Connection.....	3
Serial Connection.....	4
Start Message	4
Installing the Screen reader	4
Service.....	5
Safety Advice	5
Service and Maintenance	5
Using the Braille display with Jaws for Windows	7
Function Keys.....	7
Braille Functions	7
Moving the Braille display (Reading Window)	7
Working Modes.....	7
Selecting the Working Modes.....	8
Easy Access Bar Assignment in the Different Working Modes.....	8
Cursor Tracking	9
Braille presentation	10
Reveal Text Attributes	11
Mouse Functions	12
Using the Braille display with Dolphin Hal/Supernova.....	13
Function Keys.....	13
Braille Functions	13
Moving the Braille display (Reading Window)	13
Working Modes.....	13
Selecting the Working Modes.....	14
Easy Access Bar Assignment in the Three Working Modes	14
Cursor Tracking	16
Braille presentation	16
Reveal Text Attributes	17
Mouse Functions	18
Important Advice.....	19
Purpose of the Device.....	19
Safety Advice	19
General Precautions	19
CE-Marking	20
Copyright	20
Declarations of Conformity	20
Index.....	23



Introduction

BRAILLEX EL 80s is the best selling of Papenmeier's world-renowned Efficiency Line Braille desktop displays. It combines state-of-the-art access technology with a particularly comfortable user interface. The highlight of the unit is the patented Easy Access Bar.

This document will describe the installation and use of the device.



The Easy Access Bar

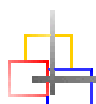
The Easy Access Bar integrated in the front of BRAILLEX EL 80s allows fast and easy navigation across the screen.

You can push the Easy Access Bar in all four directions, in two steps each. When you sit in front of the device and read the Braille display, your thumbs are naturally located in front of the Easy Access Bar.

You push the bar with your thumb. When you release it after a movement, it will jump back to the initial position. The profiled front of the bar gives your thumb enough grip to activate these keys. You feel a light resistance and hear a click when you have activated a key. Its function is generally executed only after you have released the Easy Access Bar. Only the keys with repeat function make exception.

In every direction you can access two functions. After you release it, the Easy Access Bar returns to its home position. In its home position it has no function.

Jaws for Windows obviously allows more functions than the 8 described above. Therefore, Papenmeier added two keys to the left and to the right of the Braille display. You will learn below that using the keys, you can also alter the assignment of the Easy Access Bar. You then get a selection dialog that modifies the meaning of the Easy Access Bar until you change it again.



CE Medical Devices Directive

BRAILLEX EL 80s complies with the requirements of the European Union Medical Devices Directive, as an **active class I medical product** intended to be used for the purpose of compensation for a handicap.

This product may only be used in home or office environments. In medical facilities, this product may only be used in office rooms.

Please read this manual and the information on medical devices carefully.



Symbols and Conventions

The following conventions and symbols shall help you to identify all the text elements being used in this manual:



Comment and / or additional information.



Warnings of possible dangers and safety information referring to the medical devices regulation

All trademarks and proper names mentioned in this manual are properties of their respective holders.

F.H. Papenmeier reserves the right to modify the devices described in this manual without notice.

April 2004

PAPENMEIER

F. H. Papenmeier GmbH & Co KG

Reha Division

P.O. Box 16 20

D-58211 Schwerte, Germany

Phone: +49-2304-946 0

Fax: +49-2304-946 246

Email: info.reha@papenmeier.de



Getting Started

Physical Description

The housing

Measuring 569 x 277 x 22 mm (22.4" x 10.9" x 0.87") and weighing only 2.440 kg (5.4 lbs.), BRAILLEX EL 80s is one of the smallest, flattest and lightest 80 cell Braille desktop units on the world market.

Front panel

In the rounded front you will find the integrated Easy Access Bar. The bar has a rubber profile.

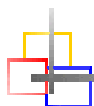
Back panel

If you face it, on the left side you have the communication ports and the power supply jack. From left to right, there is a USB connector, a 9-pin female serial connector and a power supply jack. If connected to a USB port, BRAILLEX EL 80s does not need an external power supply; this one is only required if you connect the device through the serial port.

Top

The Braille display is placed along the front line. It almost occupies the whole width of the device.

On either side of the Braille display, you will find a key. The keys have two positions each: you can press them towards the front side (for one function), and towards the rear side, for another one.



Installation

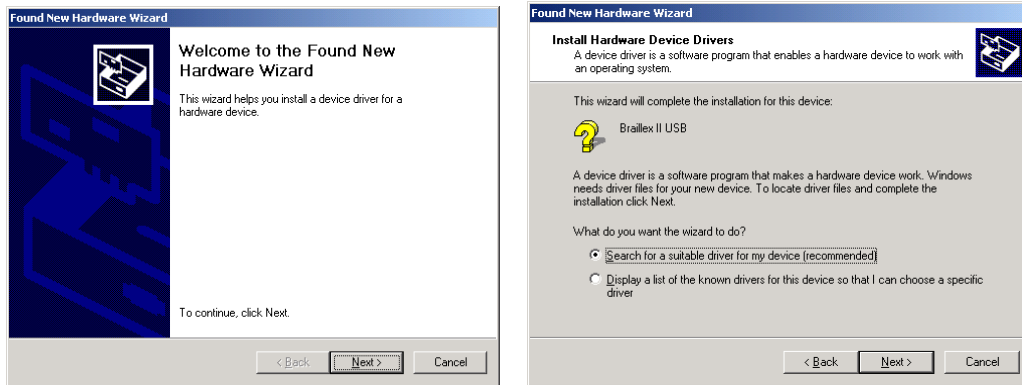
USB Connection

You connect the BRAILLEX EL device with the PC with the supplied USB cable. After a short while, a box will pop up: "Found new hardware, Braillex II USB".

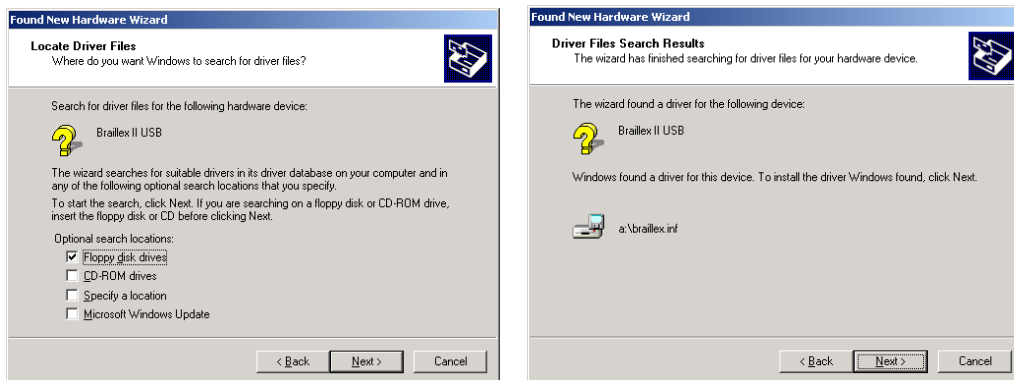


After a couple of seconds, the Found New Hardware Wizard dialog starts. Hit Enter to activate the Next button.

In the next box, check "Search for a suitable driver for my device (recommended)" and hit Enter to activate the Next button.



In the next box, you can specify the search locations to reduce the searching time. Check "Floppy disk drives" if you have the driver on a floppy disk, or "CD ROM drives" if you have it on a CD-ROM. Hit Enter to activate the Next button.



Finally, confirm that you want to install the "BRAILLEX.INF" driver that Windows found on the media you specified and hit Enter to activate the Next button.

The next box confirms that you have installed a "Papenmeier Braillex II USB device". Hit Enter to activate the Finish button.

Serial Connection

In case you want to connect BRAILLEX EL 80s via serial port, you have to use the supplied power supply. No further installation is required (besides the screen reader software, see below).

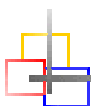
Start Message

As soon as the display unit is powered on (see above), you will see a start message:

"BRAILLEX EL 80s" and the revision number of the actual firmware of the device.

Installing the Screen reader

If you want to read the computer screen on the Braille display, you need to install and run a screen reader package. Depending on the package you might need to install driver software for the BRAILLEX EL 80s.



Service

In case of any defect of the Braille display unit, please contact an authorized Papenmeier service center. If you are in doubt about the service center responsible for your area, please contact Papenmeier:

F. H. Papenmeier GmbH & Co. KG
Phone: +49-2304-9460
Fax: +49-2304-946 246
E-mail: info.reha@papenmeier.de

If possible give a short description of the kind of disturbance.



Safety Advice



Please read the information in this manual carefully, so you will be able to avoid problems.



Use BRAILLEX EL 80s in a dry environment only. Even if the device is not powered up, it must not get wet.



Never place any heavy objects on the Braille display.



Service and Maintenance

Avoid touching the device with dirty hands. You may clean the surface of the device (NOT the Braille cells) with a soft, damp cloth. Do not use any aggressive detergent or soap.

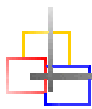


Using the Braille display with Jaws for Windows

Function Keys

BRAILLEX EL 80s offers 80 Braille cells for reading the screen. You can move this **reading window** across the screen with the **Easy Access Bar**. With the **routing keys** integrated into the Braille cells you move the mouse pointer to any desired place on the screen.

You control the Braille display either with the Easy Access Bar alone, or with the keys.



Braille Functions

Moving the Braille display (Reading Window)

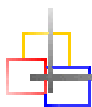
For navigating across the screen, you just use the Easy Access Bar.

Push the Easy Access Bar one step up to move the display **up one line**. Push the Easy Access Bar one step down to move the display **down one line**. You maintain the column position of your Braille display when you push the Easy Access Bar up or down.

The Easy Access Bar positions one step left and one step right have the meaning "**Read backward**" and "**Read forward**".

- Push the Easy Access Bar one step left to move the reading window 80 columns to the left.
- Push the Easy Access Bar one step right to move the reading window 80 columns to the right.

Using the "Read forward" function, you continuously read the screen, i.e. once the display has finished reading the the screen line, it will go to the next line if you continue pushing the Easy Access Bar.



Working Modes

When navigating in the active window, you can choose between three different working modes, which influence the assignment of the Easy Access Bar:

➤ **Navigation Mode**

In the Navigation Mode, you just read across the screen when using the navigation keys as described above; the cursor is NOT moved. This also means that you can explore parts of the screen where the cursor can't go.

➤ **PC Mode**

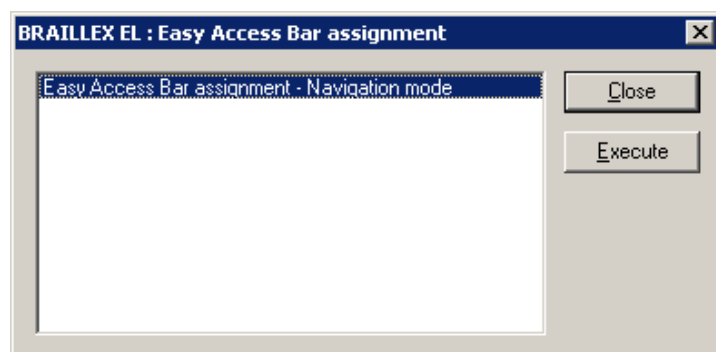
The PC mode is the opposite: Instead of moving the display across the screen when pushing the Easy Access Bar, you move the cursor. Please note that as long as the active cursor moves the Braille display, this obviously also influences the Braille display position.

➤ **Combined Mode**

The so-called Combined Mode is a mix of the two modes described above. It is useful especially when it comes to reading long text documents. Whenever you press a reading key and a line border is crossed, the PC cursor is moved to the new line as well. This means that you can read a text without having to bother about screen pages.

Selecting the Working Modes

In order to select the working modes, press the right key towards the rear. You will get a dialog box that looks like follows:



The mode displayed is the one currently selected. Move the Easy Access Bar one step left or right to change the values. Once you have reached the end of the list, you will see the first value again. The options are the following:

- Navigation mode
- PC Mode
- Combined Mode

For setting the value temporarily, push the Easy Access Bar 2 steps up. This will set the value displayed and return to the application you came from.

If you want to save the setting as a new default for the current application, push the Easy Access Bar 2 steps down. You will hear the message "settings saved", the value displayed will be activated, and you will return to the application you came from.

Easy Access Bar Assignment in the Different Working Modes

In the following you will see the assignment of the Easy Access Bar in the three different working modes:

Navigation Mode

Used for normal screen navigation. The cursor position is not changed. Two marker positions can be reached directly: the title bar (with 2 steps up) and the last window line, which typically corresponds to a status line (with 2 steps down). The main reading functions (read forwards and backwards) have a double assignment: they can be reached with both the first step and the second step right or left.

Navigation Mode Functions	
Easy Access Bar	Function
One step up	Moves the display one line up.
One step down	Moves the display one line down.
One step left	Read backwards.
Two steps left	Same as one step left.
One step right	Read forwards.
Two steps right	Same as one step right.
Two steps up	Moves the display to the title bar
Two steps down	Moves the display to the last line of the window.

PC Mode

In PC mode, the Easy Access Bar allows to navigate through an application. Easy Access Bar keys will emulate PC keyboard functions:

PC Mode Functions	
Easy Access Bar	Function
One step left	PC Left arrow key
One step up	PC Up arrow key
One step right	PC Right arrow key
One step down	PC Down arrow key
Two steps left	(Shift) + (Tab)
Two steps up	(Alt); within a dialog box or menu: (Esc)
Two steps right	(Tab)
Two steps down	(Enter)

Combined Mode

The combined mode includes both screen navigation and cursor movement features. When you move the Easy Access Bar up or down, the cursor is moved one line up or down as well (cf. PC mode). When you move the Easy Access Bar to the right, the function is the same as in navigation mode if the text line is longer than the display is. The cursor remains at the original position. Once all the text of that line has been displayed, another "read forwards" command will move both the cursor and the display to the next line. Pushing the Easy Access Bar one step left corresponds to "read backwards" if you are within a long line of text. Otherwise, both cursor and display are moved one line up.

In analogy to the navigation mode, two marker positions can be reached directly: the title bar (with 2 steps up) and the last window line, which typically corresponds to a status line (with 2 steps down). This will NOT move the cursor. The main reading functions (read forwards and backwards) have a double assignment: they can be reached with both the first step and the second step right or left.

Combined Mode Functions	
Easy Access Bar	Function
One step left	Read backwards (within a long line), or: move cursor and display to previous line
Two steps left	Same as one step left
One step up	Move cursor and display to previous line
One step right	Read forwards (within a long line), or: move cursor and display to next line
Two steps right	Same as one step right.
One step down	Move cursor and display to next line
Two steps up	Moves the display to the title bar
Two steps down	Moves the display to the last line of the window.

Cursor Tracking

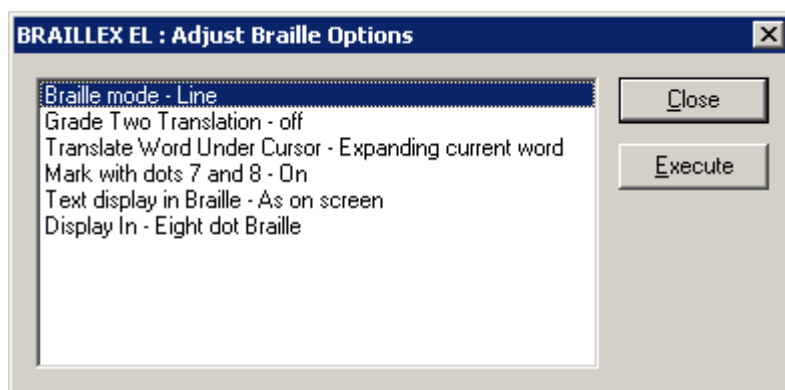
When navigating across the screen with the Braille display, you do not always take the cursor with you. You can return to the cursor position at any time. If the cursor is not present within the Braille display and you want to move the display back to the cursor position, press the right key towards the front. This will move the display to the cursor location and make sure that when the cursor is moved, the display will follow.

You can also decide not to have the Braille display follow the cursor movements. For this purpose, press the right key towards the front while the cursor is visible on the display. You will hear the message "the active cursor will not move the Braille display", and the automatic tracking is disabled. In order to enable the cursor tracking again, move the display away from the cursor and press right key towards the front again.

Cursor Tracking	
Key	Function
Right key in front position while cursor is NOT within Braille window	Enable cursor tracking and move display to the cursor position
Right key in front position while cursor is visible within Braille window	Disable cursor tracking

Braille presentation

When pressing the left key in front position, you access a number of Braille presentation options. A dialog box with six different parameters will pop up:



In this dialog, you can adjust the most frequently used Braille presentation options. The choices you have refer to the Braille verbosity settings within Jaws. The settings displayed are the ones that are currently selected.

Move the Easy Access Bar one step down or up to move between the different parameters. Move the Easy Access Bar one step left or right to change the values. The options are the following:

Braille presentation options	
Parameters	Options
Braille mode	➤ Line ➤ Structured
Grade two translation	➤ On ➤ Off
Translate word under cursor	➤ Translating whole line ➤ Expanding current word
Mark with dots 7 and 8	➤ On ➤ Off
Text display in Braille	➤ As on screen ➤ Line up text
Display in	➤ Eight dot Braille ➤ Six dot Braille

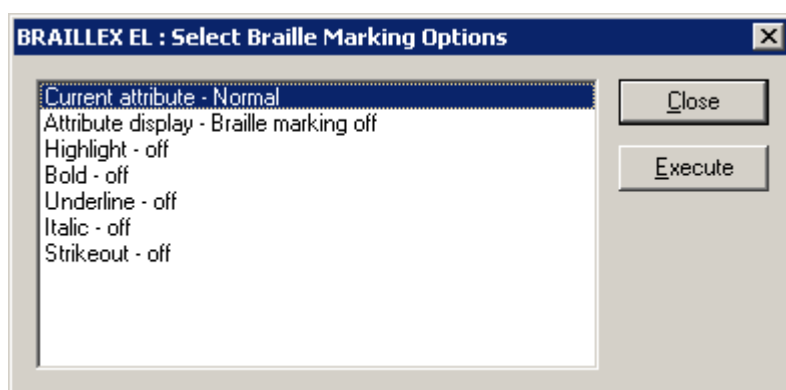
For setting the values temporarily, push the Easy Access Bar 2 steps up. This will set the value displayed and return to the application you came from.

If you want to save the setting as a new default for the current application, push the Easy Access Bar 2 steps down. You will hear the message "settings saved", the value displayed will be activated, and you will return to the application you came from.

Reveal Text Attributes

You can have the Braille display reveal different text attributes. The Braille display then underlines the corresponding portion of text with dots 7+8. You can select any of the different attributes directly, or you can choose to get all available attributes revealed. You can, of course, also disable this function.

Press the left key in rear position to activate the selection. You will see a dialog that looks like follows:



The first line in the dialog box shows the current attribute value at the cursor position of the application you are in. You can obviously also use this function to just look up the exact attribute at the cursor position.

The next line contains the global attribute display choices:

- Attribute display: Braille marking all
- Attribute display: Braille marking off
- Attribute display: Braille marking see below for current settings

If you select "Braille marking all", all text with screen attributes other than normal will be marked with dots 7 and 8. This only works if in the Braille presentation options, the "mark with dots 7 and 8" option is enabled.

The "Braille marking off" option disables the Braille marking function for all attributes.

If you have chosen one or several attributes you want to get revealed with dots 7 and 8, you get the message "Braille marking see below for current settings".

Push the Easy Access Bar one step to the left or to the right to select the settings.

In the next lines, you see the list of attributes that can be revealed with dots 7 and 8. You enable or disable the marking by pushing the Easy Access Bar one step to the left or to the right. If you modify any of the settings in this part of the dialog, line 2 will change to "Attribute display: modified". If you go back to line 2 you can then also restore the initial selection of attributes to be displayed, by choosing "Braille marking see below for current settings".

For setting the values temporarily, push the Easy Access Bar 2 steps up. This will set the value displayed and return to the application you came from.

If you want to save the setting as a new default for the current application, push the Easy Access Bar 2 steps down. You will hear the message "settings saved", the value displayed will be activated, and you will return to the application you came from.

Mouse Functions

You can activate mouse functions with all BRAILLEX EL devices, using the routing keys.

In order to execute a mouse click, you first move the Braille display to the relevant position. Then you press a routing key at the desired position. This corresponds to a left mouse click.

You can also use the routing keys to select text, for example in a word processing program. Move the display to the starting point of the marker. Hold the left key in front position while you press the routing key at the start position. Then move the display to the end point and repeat the key combination.

Mouse functions	
Key	Function
Routing key	Route mouse to the key position and execute a left mouse click
Left key in front position + routing key	Text selection

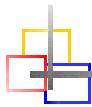


Using the Braille display with Dolphin Hal/Supernova

Function Keys

BRAILLEX EL 80s offers 80 Braille cells for reading the screen. You can move this **reading window** across the screen with the **Easy Access Bar**. With the **routing keys** integrated into the Braille cells you move the mouse pointer to any desired place on the screen.

You control the Braille display either with the Easy Access Bar alone, or with the keys.



Braille Functions

Moving the Braille display (Reading Window)

For navigating across the screen, you just use the Easy Access Bar.

Push the Easy Access Bar one step up to move the display **up one line**. Push the Easy Access Bar one step down to move the display **down one line**. You maintain the column position of your Braille display when you push the Easy Access Bar up or down.

The Easy Access Bar positions one step left and one step right have the meaning "**Read backward**" and "**Read forward**".

- Push the Easy Access Bar one step left to move the reading window 80 columns to the left.
- Push the Easy Access Bar one step right to move the reading window 80 columns to the right.

Using the "Read forward" function, you continuously read the screen, i.e. once the display has finished reading the the screen line, it will go to the next line if you continue pushing the Easy Access Bar.



Working Modes

When navigating in the active window, you can choose between three different working modes, which influence the assignment of the Easy Access Bar:

➤ **Navigation Mode**

In the Navigation Mode, you just read across the screen when using the navigation keys as described above; the cursor is NOT moved. This also means that you can explore parts of the screen where the cursor can't go.

➤ **PC Mode**

The PC mode is the opposite: Instead of moving the display across the screen when pushing the Easy Access Bar, you move the cursor. Please note that as long as the active cursor moves the Braille display, this obviously also influences the Braille display position.

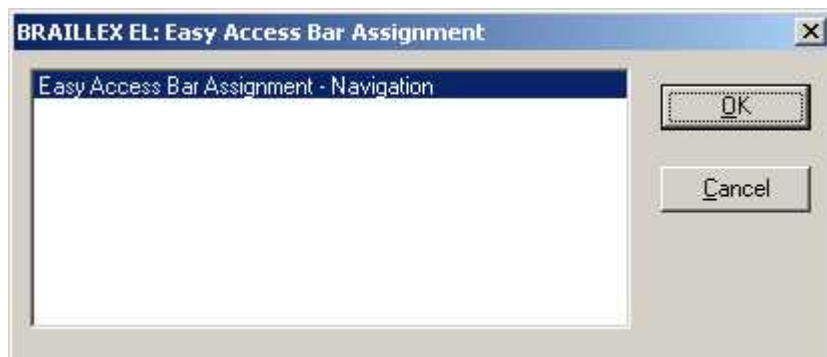
➤ **Combined Mode**

The so-called Combined Mode is a mix of the two modes described above. It is useful especially when it comes to reading long text documents. Whenever you press a reading key and a line border is crossed, the PC cursor is moved

to the new line as well. This means that you can read a text without having to bother about screen pages.

Selecting the Working Modes

In order to select the working modes, press the right key towards the rear. You will get a dialog box that looks like follows:



The mode displayed is the one currently selected. Move the Easy Access Bar one step left or right to change the values. Once you have reached the end of the list, you will see the first value again. The options are the following:

- Navigation mode
- PC Mode
- Combined Mode

If you want to save the setting, push the Easy Access Bar 2 steps down. The value displayed will be activated, and you will return to the application you came from.

If you want to exit without saving the changes, push the Easy Access Bar 2 steps up. You will then return to the application you came from.

Easy Access Bar Assignment in the Three Working Modes

In the following you will see the assignment of the Easy Access Bar in the three different working modes:

Navigation Mode

Used for normal screen navigation. The cursor position is not changed. Two marker positions can be reached directly: the title bar (with 2 steps up) and the last window line, which typically corresponds to a status line (with 2 steps down). The main reading functions (read forwards and backwards) have a double assignment: they can be reached with both the first step and the second step right or left.

Navigation Mode Functions	
Easy Access Bar	Function
One step up	Moves the display one line up.
One step down	Moves the display one line down.
One step left	Read backwards.
Two steps left	Same as one step left.
One step right	Read forwards.
Two steps right	Same as one step right.
Two steps up	Moves the display to the title bar
Two steps down	Moves the display to the last line of the window.

PC Mode

In PC mode, the Easy Access Bar allows to navigate through an application. Easy Access Bar keys will emulate PC keyboard functions:

PC Mode Functions	
Easy Access Bar	Function
One step left	PC Left arrow key
One step up	PC Up arrow key
One step right	PC Right arrow key
One step down	PC Down arrow key
Two steps left	(Shift) + (Tab)
Two steps up	(Esc)
Two steps right	(Tab)
Two steps down	(Enter)

Combined Mode

The combined mode includes both screen navigation and cursor movement features. When you move the Easy Access Bar up or down, the cursor is moved one line up or down as well (cf. PC mode). When you move the Easy Access Bar to the right, the function is the same as in navigation mode if the text line is longer than the display is. The cursor remains at the original position. Once all the text of that line has been displayed, another "read forwards" command will move both the cursor and the display to the next line. Pushing the Easy Access Bar one step left corresponds to "read backwards" if you are within a long line of text. Otherwise, both cursor and display are moved one line up.

In analogy to the navigation mode, two marker positions can be reached directly: the title bar (with 2 steps up) and the last window line, which typically corresponds to a status line (with 2 steps down). This will NOT move the cursor. The main reading functions (read forwards and backwards) have a double assignment: they can be reached with both the first step and the second step right or left.

Combined Mode Functions	
Easy Access Bar	Function
One step left	Read backwards (within a long line), or: move cursor and display to previous line
Two steps left	Same as one step left
One step up	Move cursor and display to previous line
One step right	Read forwards (within a long line), or: move cursor and display to next line
Two steps right	Same as one step right.
One step down	Move cursor and display to next line
Two steps up	Moves the display to the title bar
Two steps down	Moves the display to the last line of the window.

Cursor Tracking

When navigating across the screen with the Braille display, you do not always take the cursor with you. You can return to the cursor position at any time. If you want to move the display back to the cursor position, press the right key towards the front. This will move the display to the cursor location.

Cursor Tracking	
Key	Function
Right key in front position	Move display to the cursor position

Braille presentation

When pressing the left key in front position, you access a number of Braille presentation options. A dialog box with six different parameters will pop up:



In this dialog, you can adjust the most frequently used Braille presentation options. The choices you have refer to the Braille verbosity settings within Jaws. The settings displayed are the ones that are currently selected.

Move the Easy Access Bar one step down or up to move between the different parameters. Move the Easy Access Bar one step left or right to change the values. The options are the following:

Braille presentation options	
Parameters	Options
Braille mode	Logical Physical
Literary Braille	On Off
Cursor at word uncontracted	On Off
Enhanced characters	On Off
Expand gaps	On Off
Display in eight dot	On Off

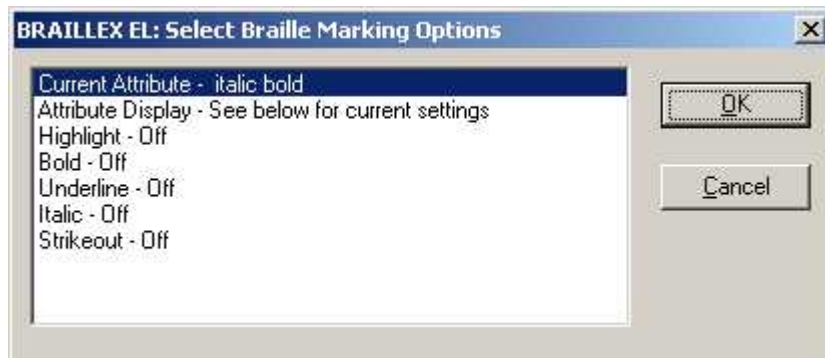
If you want to save the setting, push the Easy Access Bar 2 steps down. The value displayed will be activated, and you will return to the application you came from.

If you want to exit without saving the changes, push the Easy Access Bar 2 steps up. You will then return to the application you came from.

Reveal Text Attributes

You can have the Braille display reveal different text attributes. The Braille display then underlines the corresponding portion of text with dots 7+8. You can select any of the different attributes directly, or you can choose to get all available attributes revealed. You can, of course, also disable this function.

Press the left key in rear position to activate the selection. You will see a dialog that looks like follows:



The first line in the dialog box shows the current attribute value at the cursor position of the application you are in. You can obviously also use this function to just look up the exact attribute at the cursor position.

The next line contains the global attribute display choices:

- Attribute display: Braille marking all
- Attribute display: Braille marking off
- Attribute display: See below for current settings

If you select "Braille marking all", all text with screen attributes other than normal will be marked with dots 7 and 8. This only works if in the Braille presentation options, the "mark with dots 7 and 8" option is enabled.

The "Braille marking off" option disables the Braille marking function for all attributes.

If you have chosen one or several attributes you want to get revealed with dots 7 and 8, you get the message "Braille marking see below for current settings".

Push the Easy Access Bar one step to the left or to the right to select the settings.

In the next lines, you see the list of attributes that can be revealed with dots 7 and 8. You enable or disable the marking by pushing the Easy Access Bar one step to the left or to the right. If you modify any of the settings in this part of the dialog, line 2 will change to "Attribute display: modified". If you go back to line 2 you can then also restore the initial selection of attributes to be displayed, by choosing "Braille marking see below for current settings".

If you want to save the setting, push the Easy Access Bar 2 steps down. The value displayed will be activated, and you will return to the application you came from.

If you want to exit without saving the changes, push the Easy Access Bar 2 steps up. You will then return to the application you came from.

Mouse Functions

You can activate mouse functions with all BRAILLEX EL devices, using the routing keys. In order to execute a mouse click, you first move the Braille display to the relevant position. Then you press a routing key at the desired position. This corresponds to a left mouse click.

Mouse functions	
Key	Function
Routing key	Route mouse to the key position and execute a left mouse click



Important Advice

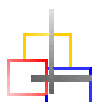
Purpose of the Device

BRAILLEX EL 80s is intended to be used for the purpose of compensation for the visual handicap of blind people.

According to the European Council directive 93/42/EEC (Medical Devices Directive), they have therefor been classified as active class I medical devices.

These products may only be used in home or office environments. In medical facilities, this product may only be used in office rooms.

The connected PC must comply with the standards regarding safety and EMC (electro-magnetic compatibility) relevant for the area where it is used.



Safety Advice

Before starting to operate the BRAILLEX EL device, the user should read this manual.

The device shall only be installed by a trained person.

The device may only be used with the original accessories and in combination with the products foreseen for this purpose by F. H. Papenmeier. If a combination with other devices is necessary, those devices must comply with the relevant standards.

- The device may only be used in closed and dry rooms. The ambient temperature must not exceed 40° C (ca. 105° F). Do not expose the device to direct sunlight or humidity (rain).
- Repairs and maintenance work may only be undertaken by Papenmeier or by authorized service centers.

There are no known risks for your health that might be caused by the use of this product.



General Precautions

Our products guarantee optimum safety and reduce to a minimum the strain caused through over-exertion. However, when respecting some precautions you can contribute to avoid prejudice to your health or damage to the product.

If a cellular phone is used close to the product, a minimum distance of 30 cm (1 ft) shall be respected.

Do not expose the product to strong pressure, and do not drop any objects on the product. This might damage the product or lead to misfunctions.

In order to avoid repetitive strain injury at your hands caused through long-time use of the function elements and reading the Braille display, we suggest pauses and relaxation exercise. In specialized bookshops you also find literature on how to equip a workplace in an ergonomical way and on how to avoid strain through an appropriate sitting position.



CE-Marking

The BRAILLEX EL devices and their original accessories comply with the relevant standards regarding the electro-magnetic compatibility (EMC) and the safety, and are marked with the CE sign.

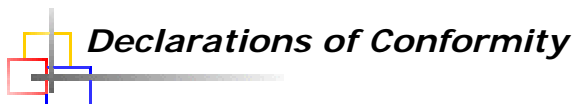
FHP cannot guarantee however that these products still comply with these EMC standards if they are connected to cables or devices not produced by F. H. Papenmeier. In this case, the person(s) who connected the cables or devices are responsible for taking care that the combination complies with the required standards. In order to avoid EMC problems, you should observe the following advice:

- Only connect accessories and devices marked with the CE mark.
- Only use shielded connecting cables.



Copyright

© 2004-2008 by F. H. Papenmeier. All rights reserved.



Declarations of Conformity

EC Declaration of Conformity

acc. to Article 10.1 of the Directive 89/336/EEC (EMC-Directive)

We, F. H. Papenmeier GmbH & Co KG
Talweg 2
58239 Schwerte, Germany
Name and address of the manufacturer or of the introducer of the product
who is established in the EU

herewith take the sole responsibility to confirm that the product:

Braille Terminal **BRAILLEX EL 80s**

Type designation and, if applicable, article no.

is in accordance with the following standards or standardized documents

- | | |
|--|----------------------|
| 1. EN 55 022:1998 + A1:2000 Kl. B | RF emission |
| EN 55 022 | conducted noise |
| EN 55 022 | radiated noise |
| EN 61 000-3-2:2001 | harmonics |
| EN 61 000-3-3:1995 + A1:2001 | flicker |
| 2. EN 55 024:1998 | immunity |
| EN 61 000-4-6:1996 + A1:2001 | injected HF currents |
| EN 61 000-4-3:1996 + A1:1998 + A2:2001 | radiated HF fields |
| EN 61 000-4-4:1995 + A1:2001 + A2:2001 | Burst |
| EN 61 000-4-5:1995 + A1:2001 | Surge |
| EN 61 000-4-11:1994 + A1:2000 | voltage variations |
| EN 61 000-4-2:1995 + A1:1998 + A2:2001 | ESD |

(Title and/or number and date of the standard(s) or other standardized documents)

The following operating conditions and installation arrangements have to be presumed:

Cf. User's Manual, chapter Safety Advice

This confirmation is based on test report
21113028_001
TÜV Rheinland Safety GmbH, 51101 Köln, Germany



Jürgen Bornschein, Chief Engineer
F.H. Papenmeier GmbH & Co KG, Talweg 2, 58239 Schwerte, Germany
Schwerte, August 4, 2004
Name, address, date and legally binding signature of the person responsible

Declaration

FCC 47 CFR Ch. 1 §2.906 Declaration of Conformity

We, F. H. Papenmeier GmbH & Co KG
Talweg 2
58239 Schwerte, Germany
Name and address of the manufacturer or of the introducer of the product
who is established in the EU

herewith take the sole responsibility to confirm that the product:

Braille Terminal BRAILLEX EL 80s

Type designation and, if applicable, article no.

is in accordance with the following standards or standardized documents

FCC 47 CFR Ch.1 Part 15	RF emission
Section 15.107(a), limits as	conducted noise, AC power input
IEC/CISPR 22:1007 Class B	
(EN 55 022:1998 Class B)	
Section 15.109(a) Class B	radiated el. noise
Per Sections 15.109(g), i.e.	radiated el. noise
IEC/CISPR 22:1007 Class B	
(EN 55 022:1998 Class B)	

(Title and/or number and date of the standard(s) or other standardized documents)

The following operating conditions and installation arrangements have to be presumed:

Cf. User's Manual, chapter Safety Advice

This confirmation is based on test report

21113467_001

TÜV Rheinland Safety GmbH, 51101 Köln, Germany

FCC Registration Number 91096, 2001-July-25

DAR Accreditation (DA Tech e.V.) DAT-P-009/91-12, 2002-Oct-28



Jürgen Bornschein, Chief Engineer
F.H. Papenmeier GmbH & Co KG, Talweg 2, 58239 Schwerte, Germany
Schwerte, August 4, 2004
Name, address, date and legally binding signature of the person responsible

Index

A

attributes 11
Attributes (Dolphin) 17

B

Braille presentation options 10
Braille presentation options (Dolphin) 16

C

CE Medical Devices Directive I
CE sign..... 20
clean..... 5
compensation..... 19
conventions II
cursor
 active cursor 10
 disable cursor tracking..... 10
Cursor
 move to cursor position (Dolphin) 16

D

Declaration of Conformity
 Directive 89/336/EEC 21
 FCC 47 CFR Ch.1 §2.906 22

E

Easy Access Bar..... I
EMC..... 20
EU Medical Devices Directive I

I

Installation
 Serial connection 4
 USB connection..... 3

K

keys I, 3

M

misfunctions 19

N

navigating..... 7, 13

P

Power supply..... 3

R

Routing
 Mouse routing..... 12
 Mouse routing (Dolphin) 18
 Text selection 12

S

safety..... 19
Serial connector..... 3
service 5
start message 4
symbols..... II

U

USB connector..... 3

W

Working Modes
 Combined mode..... 9
 Combined mode (Dolphin) 15
 Navigation mode 8
 Navigation mode (Dolphin) 14
 PC mode 9
 PC mode (Dolphin) 15

